

Meadow View, 1 Dodnor Mews Dodnor Lane, Newport, PO30 5JN

Asking Price £875,000

EPC Rating: D Council Tax Band: G

ELLIOTT
LINCOLN
ESTATE AGENTS & ASSOCIATES

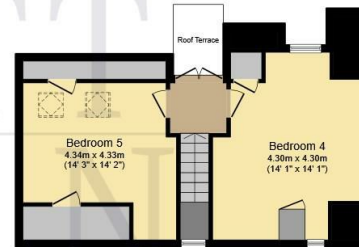
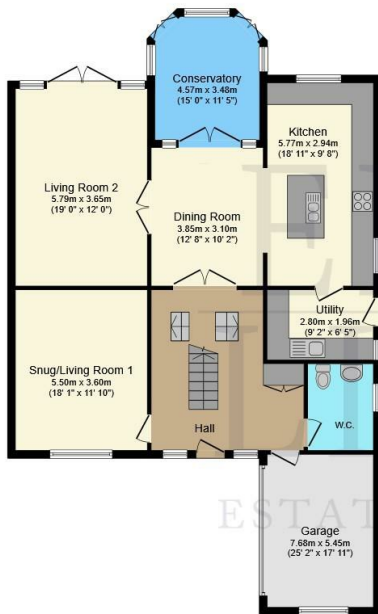
Reassuringly familiar, refreshingly new



A striking double-fronted detached home set behind remote-controlled electric gates on the semi-rural outskirts of Newport, this impressive residence combines elegant proportions, highly sociable living space and glorious views over its gardens, paddock and surrounding countryside. With a sweeping central staircase, a large integral double garage, beautifully styled sash windows and land stretching down towards the River Medina, Meadow View is a rare lifestyle home with immense presence and exciting long-term potential, subject to any necessary consents.

Call or WhatsApp: 01983 642622
office@elliottlincoln.co.uk
www.elliottlincoln.co.uk

1 Dodnor Mews, Dodnor Lane, Newport, PO30 5JN



Total floor area: 272.2 sq.m. (2,930 sq.ft.)

This floor plan is for illustrative purposes only. It is not drawn to scale. Any measurements, floor areas (including any total floor area), openings and orientations are approximate. No details are guaranteed, they cannot be relied upon for any purpose and do not form any part of any agreement. No liability is taken for any error, omission or misstatement. A party must rely upon its own inspection(s). Powered by www.Propertybox.io

Energy Efficiency Rating		Current	Potential
Very energy efficient - lower running costs			
(92 plus) A			
(81-91) B			
(69-80) C			
(55-68) D		65	
(39-54) E			
(21-38) F			
(1-20) G			
Not energy efficient - higher running costs			
England & Wales		EU Directive 2002/91/EC	